



5 Fox Street
Rothwell, NN14 6AN



The Old Bakery – Rothwell

A rare opportunity to acquire a distinctive three-bedroom semi-detached character home, beautifully presented throughout and blending period charm with modern living. The property features exposed oak beams, stripped pine doors, deep skirting boards, and striking brick fireplaces, creating a home full of warmth and individuality.

The ground floor offers versatile living space, with a welcoming entrance hall, cloakroom, and an impressive lounge/diner forming the heart of the home. Here, a feature brick fireplace with log-burning stove creates a cosy focal point, while natural light enhances the sense of space. A second reception room provides flexibility for a snug, home office, or playroom.

The kitchen is both stylish and practical, fitted with oak work surfaces, a central island with induction hob, and integrated appliances including a double oven and dishwasher. This leads into a spacious, fully fitted utility room with additional storage and appliance space.

Upstairs, the standout principal bedroom showcases exposed beams and leads into a dressing room or nursery. Two further double bedrooms continue the character theme with exposed wooden flooring.

The family bathroom features a four-piece suite including a bath and separate shower with jets and rainfall head, alongside a separate WC.

Externally, the property offers a low-maintenance courtyard garden and a covered carport providing off-road parking for multiple vehicles.

Ideally located close to local amenities, this unique home offers space, character, and practicality. Early viewing is highly recommended.

Agent's Note: The vendor has indicated that he can install a low-level fence, if required, for prospective purchasers to create a defined courtyard area.

Offers In Excess Of £295,000



3

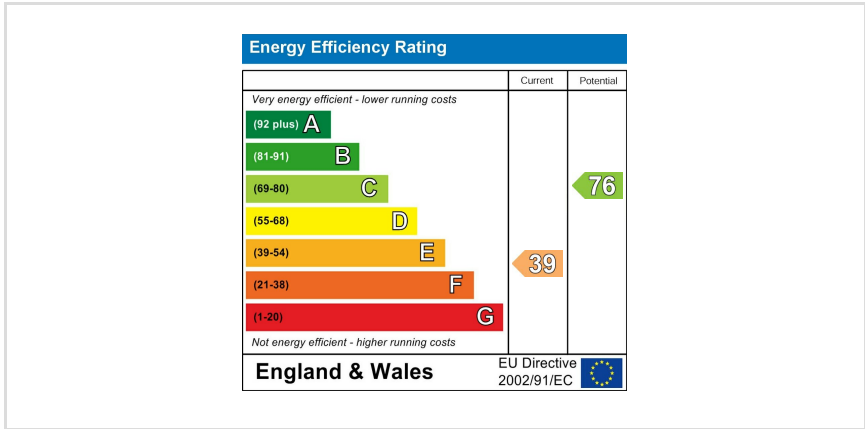
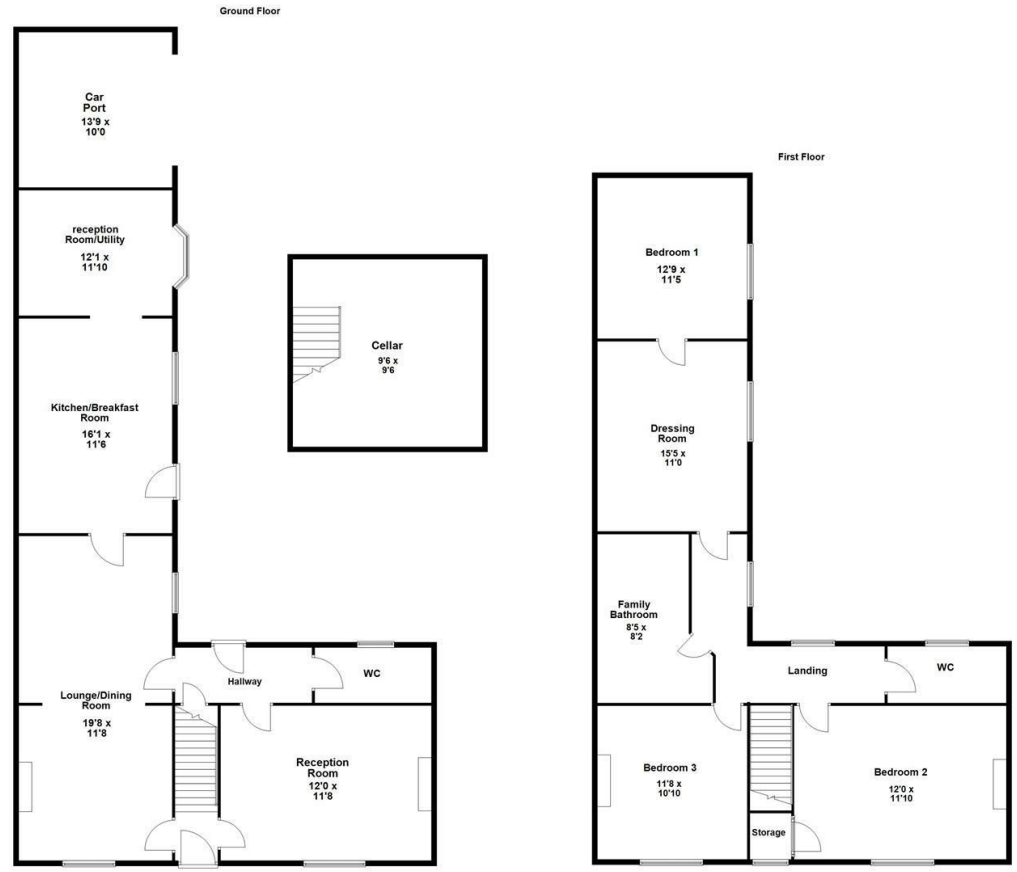


3



3







**Simpson
Ellson**

T: 01536 645960

E: rothwell@simpsonellson.co.uk



01536 645960

rothwell@simpsonellson.co.uk

<https://www.simpsonellson.co.uk>

32 High Street, Rothwell, Northants, NN14 6BQ